



## Southern Tower - Features

Total Area: 22,000 SQM

111

Open-Plan  
Workstations

2

Large Meeting  
Rooms

7

Meeting Rooms  
(Various Sizes)

4

Private  
Offices



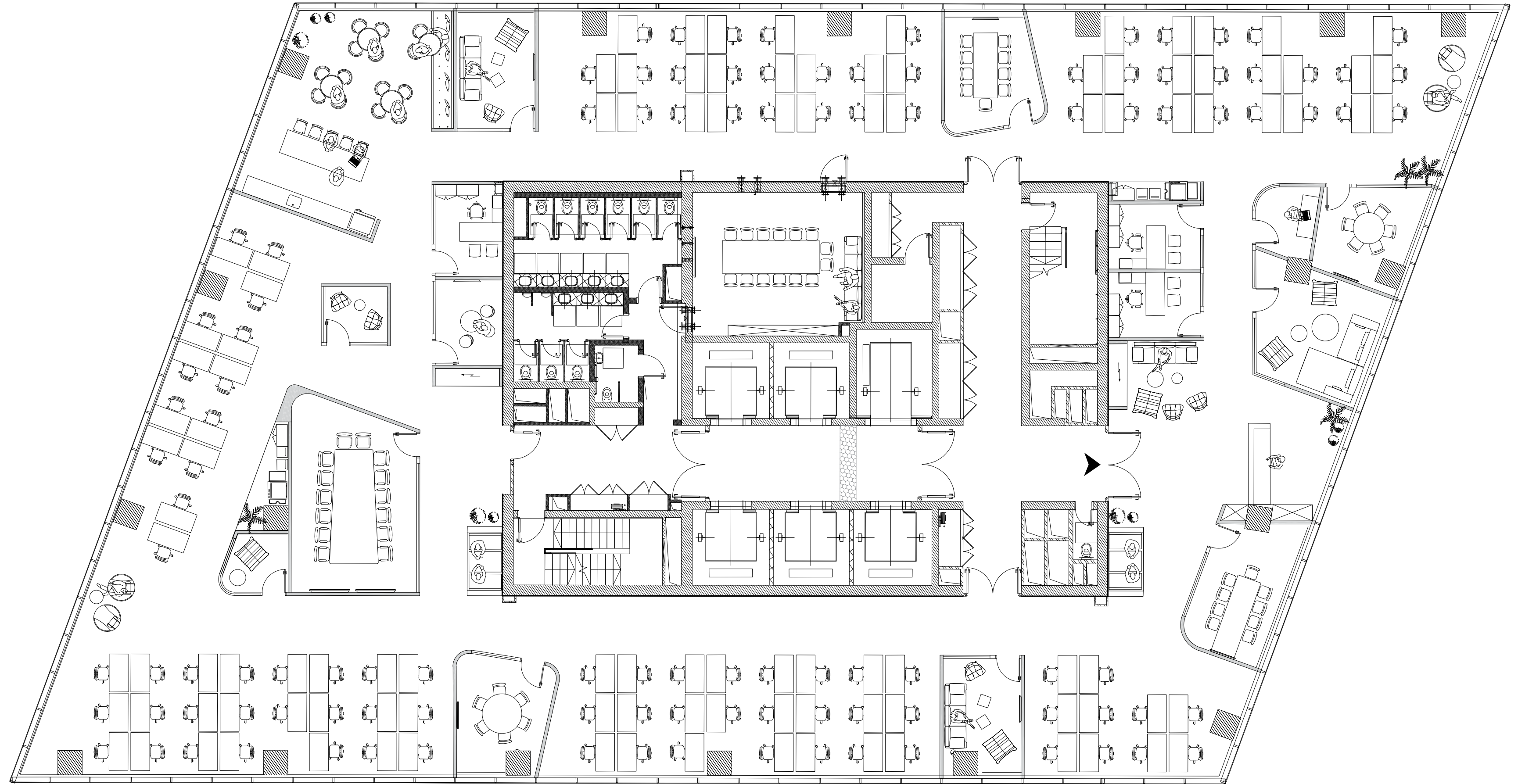
Alternative  
Sitting Areas



Stylish  
Cafeteria

## 5th Floor Plan

1,330 sqm (gross) | 115 people



\*Optional layout floor plan